

A 4x4 grid of colored squares. The top row is yellow, the second row is light orange, the third row is orange, and the bottom row is red. The text "DISPLAY LIGHT" is centered in the second row.

**DISPLAY LIGHT**



## MINI 3W

750.-

DIA 52 mm. H 25 mm.



### CREE CHIP LED 3W 260lm



3000K, 4000K, 6000K

Matt white/ Matt black/ Silver



Adjustable  
Aluminium Body  
Driver included  
Non-Dim  
Dimmable (0-10V/ Triac) Optional

**IP 20**

## MINI-D 3W

1000.-

DIA 52 mm. H 35 mm.



### LED COB 3W 260lm



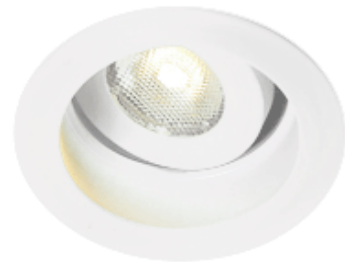
3000K, 4000K

Sand white/ Sand black trim



Adjustable  
Aluminium Body  
Driver included  
Non-Dim  
Dimmable (0-10V/ Triac) Optional

**IP 20**



DISPLAY LIGHT



## SHOT

750.-

DIA 25 mm. H 52 mm.



**LED COB 3W 270lm**

3000K, 6000K

Matt black/ Matt silver

**IP 20**



Fully adjustable  
Aluminium Body

Driver included

Non-Dim

Dimmable (0-10V/ Triac) Optional

## PAX

850.-

DIA 58 mm. H 14 mm.



**LED COB 3W 280lm**



3000K

Matt black/ Matt silver

**IP 44**



Fixed

Aluminium Body

Driver included

Non-Dim



DISPLAY LIGHT



## RIZ 3W

750.-

DIA 40 mm. H 50 mm.



**CREE CHIP LED 3W 260lm**



3000K, 4000K

Matt white, Matt black trim



Fixed

Aluminium Body

Driver included

Non-Dim

Dimmable (0-10V/ Triac) Optional

**IP 20**

## FOCUS 3W

850.-

DIA 48 mm. H 37 mm.



**CREE CHIP LED 3W 260lm**



3000K, 6000K

Matt white, Matt black trim



Fully adjustable

Aluminium Body

Driver included

Non-Dim

Dimmable (0-10V/ Triac) Optional

**IP 20**



DISPLAY LIGHT



## JOOX-A 3W

750.-

DIA 50 mm. H 30 mm.



**CREE CHIP LED 3W 265lm**



3000K, 4000K  
Matt white trim

**IP 20**



- Adjustable
- Aluminium Body
- Driver included
- Non-Dim
- Dimmable (0-10V/ Triac) Optional

## JOOX-B 3W

750.-

DIA 40 mm. H 28 mm.



**CREE CHIP LED 3W 265lm**



3000K, 4000K  
Matt white trim

**IP 20**



- Fixed
- Aluminium Body
- Driver included
- Non-Dim
- Dimmable (0-10V/ Triac) Optional



DISPLAY LIGHT

## DOSS 1.5W

600.-

DIA 35 mm. H 22 mm.



**LED COB 1.5W 140lm**



3000K, 4000K

Matt white, Matt black trim



Fixed

Aluminium Body

Driver included

Non-Dim

Dimmable (0-10V/ Triac) Optional

**IP 20**

## BAM 3W

600.-

DIA 42 mm. H 33 mm.



**LED COB 3W 260lm**



3000K, 4000K

Sand white/ Sand black trim



Adjustable

Aluminium Body

Driver included

Non-Dim

Dimmable (0-10V/ Triac) Optional

**IP 20**



DISPLAY LIGHT



## NAKO

1150.-

DIA 23x33 mm. H 310 mm.



**LED COB 3W 270lm**



3000K, 4000K, 6000K  
Matt black/ Matt silver

**IP 20**

- Fully adjustable
- Aluminium Body
- Driver included
- Non-Dim
- Dimmable (0-10V/ Triac) Optional

## HAPER

1350.-

DIA 80x25x10 mm. H 320 mm.



**LED COB 3x1W 270lm**



6000K  
Matt black/ Matt silver

**IP 20**

- Fully adjustable
- Aluminium Body
- Driver included
- Non-Dim
- Dimmable (0-10V/ Triac) Optional



DISPLAY LIGHT



## LEMO

1500.-

DIA 6 mm. H 250-350 mm.



**LED SMD 3W 250lm**



3000K, 6000K

Matt black/ Matt silver

**IP 20**



Fixed  
Aluminium Body  
Driver included  
Non-Dim

## TRIPO

135 0.-

DIA 10 mm. H 255 mm.



**LED COB 3x1W 250lm**



3000K, 6000K

Matt black/ Matt silver

**IP 20**



Fully adjustable  
Aluminium Body  
Driver included  
Non-Dim



## MINI SPOT

800.-

DIA 22 mm. H 46 mm.



**LED COB 3x1W 80lm**



3000K, 6000K

Matt black/ Matt silver

**IP 20**



Fully adjustable  
Aluminium Body  
Use with 12Vdc power supply  
Use with mini track (600B/m.)  
Non-Dim

DISPLAY LIGHT





## BELLA

1800.-

DIA 24 mm. H 198 mm.



**LED COB 3x1W 270lm**



6000K

Matt black/ Matt silver

**IP 20**

- Fully adjustable
- Aluminium Body
- Driver included
- Non-Dim
- Dimmable (0-10V/ Triac) Optional

## SOLO

1650.-

DIA 15x43 mm. H 300 mm.



**LED COB 3W 270lm**



6000K

Matt black/ Matt silver

**IP 20**

- Fully adjustable
- Aluminium Body
- Driver included
- Non-Dim
- Dimmable (0-10V/ Triac) Optional



DISPLAY LIGHT



## EMMY-S

1500.-

DIA 15x55 mm. H 200 mm.



**LED COB 2W 160lm**

3000K, 4000K, 6000K  
Matt black/ Matt silver

**IP 20**



Fully adjustable  
Aluminium Body  
Driver included  
Non-Dim  
Dimmable (0-10V/ Triac) Optional

## EMMY-M

2000.-

DIA 15x55 mm. H 200 mm.



**LED COB 2x2W 320lm**

3000K, 4000K, 6000K  
Matt black/ Matt silver

**IP 20**



Fully adjustable  
Aluminium Body  
Driver included  
Non-Dim  
Dimmable (0-10V/ Triac) Optional



DISPLAY LIGHT



## ZOOM

2000.-

DIA 30x50 mm. H 200 mm.



**LED COB 2W 160lm**

15-36° 3000K, 4000K, 6000K  
Matt black/ Matt silver

**IP 20**

- Fully adjustable
- Aluminium Body
- Driver included
- Non-Dim
- Dimmable (0-10V/ Triac) Optional

## ROLL

1800.-

DIA 15x55 mm. H 200 mm.



**LED COB 2W 160lm**

24° 3000K, 4000K, 6000K  
Matt black/ Matt silver

**IP 20**

- Fully adjustable
- Aluminium Body
- Driver included
- Non-Dim
- Dimmable (0-10V/ Triac) Optional



DISPLAY LIGHT



## JANELL

1550.-

DIA 23x33 mm. H 300 mm.



**LED COB 3W 270lm**

3000K, 4000K, 6000K  
Matt black/ Matt silver

**IP 20**



Fully adjustable  
Aluminium Body

Driver included

Non-Dim

Dimmable (0-10V/ Triac) Optional

## FREYA

1450.-

DIA 18x58 mm. H 338 mm.



**LED COB 3x1W 270lm**

3000K, 4000K, 6000K  
Matt black/ Matt silver

**IP 20**



Fully adjustable  
Aluminium Body

Driver included

Non-Dim

Dimmable (0-10V/ Triac) Optional



DISPLAY LIGHT



## SAPP

4000.-

DIA 16x18 mm. H 1000 mm.



**LED COB 7x1W 560lm**

3000K, 4000K, 6000K  
Matt black/ Matt silver

**IP 20**



- Fully adjustable
- Aluminium Body
- Driver included
- Non-Dim
- Dimmable (0-10V/ Triac) Optional

## SAMO

1800.-

DIA 12.5 mm. H 336 mm.



**LED SMD 5W 500lm**

3000K, 4000K, 6000K  
Matt black/ Matt silver

**IP 20**



- Adjustable
- Aluminium Body
- 12Vdc Driver excluded
- Non-Dim



DISPLAY LIGHT