

A 5x4 grid of squares. The top row is the lightest blue, and the bottom row is the darkest blue. The text 'DISPLAY LIGHT' is written in white, bold, italicized font in the bottom row.

DISPLAY LIGHT



SHOT

750.-

DIA 25 mm. H 52 mm.



LED COB 3W 270lm

3000K, 6000K

Matt black/ Matt silver

IP 20



Fully adjustable

Aluminium Body

Driver included

Non-Dim

Dimmable (0-10V/ Triac) Optional

PAX

850.-

DIA 58 mm. H 14 mm.



LED COB 3W 280lm



3000K

Matt black/ Matt silver

IP 44



Fixed

Aluminium Body

Driver included

Non-Dim



DISPLAY LIGHT



LEMO **1500.-**

DIA 6 mm. H 250-350 mm.



LED SMD 3W 250lm

120° 3000K, 6000K
Matt black/ Matt silver

IP 20



Fixed
Aluminium Body
Driver included
Non-Dim

TRIPO **135 0.-**

DIA 10 mm. H 255 mm.



LED COB 3x1W 250lm

30° 3000K, 6000K
Matt black/ Matt silver

IP 20



Fully adjustable
Aluminium Body
Driver included
Non-Dim



MINI SPOT **800.-**

DIA 22 mm. H 46 mm.



LED COB 3x1W 80lm

30° 3000K, 6000K
Matt black/ Matt silver

IP 20



Fully adjustable
Aluminium Body
Use with 12Vdc power supply
Use with mini track (600B/m.)
Non-Dim

DISPLAY LIGHT



NAKO

1150.-

DIA 23x33 mm. H 310 mm.



LED COB 3W 270lm



3000K, 4000K, 6000K
Matt black/ Matt silver

IP 20

- Fully adjustable
- Aluminium Body
- Driver included
- Non-Dim
- Dimmable (0-10V/ Triac) Optional

HAPER

1350.-

DIA 80x25x10 mm. H 320 mm.



LED COB 3x1W 270lm



6000K
Matt black/ Matt silver

IP 20

- Fully adjustable
- Aluminium Body
- Driver included
- Non-Dim
- Dimmable (0-10V/ Triac) Optional



DISPLAY LIGHT



BELLA

1800.-

DIA 24 mm. H 198 mm.



LED COB 3x1W 270lm



6000K

Matt black/ Matt silver

IP 20

- Fully adjustable
- Aluminium Body
- Driver included
- Non-Dim
- Dimmable (0-10V/ Triac) Optional

SOLO

1650.-

DIA 15x43 mm. H 300 mm.



LED COB 3W 270lm



6000K

Matt black/ Matt silver

IP 20

- Fully adjustable
- Aluminium Body
- Driver included
- Non-Dim
- Dimmable (0-10V/ Triac) Optional



DISPLAY LIGHT



JANELL

1550.-

DIA 23x33 mm. H 300 mm.



LED COB 3W 270lm

3000K, 4000K, 6000K
Matt black/ Matt silver

IP 20



Fully adjustable
Aluminium Body
Driver included
Non-Dim
Dimmable (0-10V/ Triac) Optional

FREYA

1450.-

DIA 18x58 mm. H 338 mm.



LED COB 3x1W 270lm

3000K, 4000K, 6000K
Matt black/ Matt silver

IP 20



Fully adjustable
Aluminium Body
Driver included
Non-Dim
Dimmable (0-10V/ Triac) Optional



DISPLAY LIGHT



EMMY-S

1500.-

DIA 15x55 mm. H 200 mm.



LED COB 2W 160lm

3000K, 4000K, 6000K
Matt black/ Matt silver

IP 20



Fully adjustable
Aluminium Body
Driver included
Non-Dim
Dimmable (0-10V/ Triac) Optional

EMMY-M

2000.-

DIA 15x55 mm. H 200 mm.



LED COB 2x2W 320lm

3000K, 4000K, 6000K
Matt black/ Matt silver

IP 20



Fully adjustable
Aluminium Body
Driver included
Non-Dim
Dimmable (0-10V/ Triac) Optional



DISPLAY LIGHT



ZOOM

2000.-

DIA 30x50 mm. H 200 mm.



LED COB 2W 160lm

15-36° 3000K, 4000K, 6000K
Matt black/ Matt silver

IP 20

- Fully adjustable
- Aluminium Body
- Driver included
- Non-Dim
- Dimmable (0-10V/ Triac) Optional

ROLL

1800.-

DIA 15x55 mm. H 200 mm.



LED COB 2W 160lm

24° 3000K, 4000K, 6000K
Matt black/ Matt silver

IP 20

- Fully adjustable
- Aluminium Body
- Driver included
- Non-Dim
- Dimmable (0-10V/ Triac) Optional



DISPLAY LIGHT

SAPP

4000.-

DIA 16x18 mm. H 1000 mm.



LED COB 7x1W 560lm

3000K, 4000K, 6000K
Matt black/ Matt silver

IP 20



Fully adjustable
Aluminium Body
Driver included
Non-Dim
Dimmable (0-10V/ Triac) Optional

SAMO

1800.-

DIA 12.5 mm. H 336 mm.



LED SMD 5W 500lm

3000K, 4000K, 6000K
Matt black/ Matt silver

IP 20



Adjustable
Aluminium Body
12Vdc Driver excluded
Non-Dim



DISPLAY LIGHT



DOSS 1.5W

600.-

DIA 35 mm. H 22 mm.



LED COB 1.5W 140lm



3000K, 4000K

Matt white, Matt black trim



Fixed

Aluminium Body

Driver included

Non-Dim

Dimmable (0-10V/ Triac) Optional

IP 20

RIZ 3W

750.-

DIA 40 mm. H 50 mm.



CREE CHIP LED 3W 260lm



3000K, 4000K

Matt white, Matt black trim



Fixed

Aluminium Body

Driver included

Non-Dim

Dimmable (0-10V/ Triac) Optional

IP 20



FOCUS 3W

850.-

DIA 48 mm. H 37 mm.



CREE CHIP LED 3W 260lm



3000K, 6000K

Matt white, Matt black trim



Fully adjustable

Aluminium Body

Driver included

Non-Dim

Dimmable (0-10V/ Triac) Optional

IP 20



DISPLAY LIGHT



MINI 3W

750.-

DIA 52 mm. H 25 mm.



CREE CHIP LED 3W 260lm



3000K, 4000K, 6000K

Matt white/ Matt black/ Silver



Adjustable

Aluminium Body

Driver included

Non-Dim

Dimmable (0-10V/ Triac) Optional

IP 20

MINI-D 3W

1000.-

DIA 52 mm. H 35 mm.



LED COB 3W 260lm



3000K, 4000K

Sand white/ Sand black trim



Adjustable

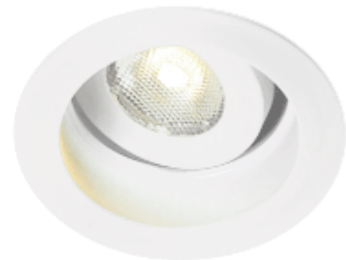
Aluminium Body

Driver included

Non-Dim

Dimmable (0-10V/ Triac) Optional

IP 20



DISPLAY LIGHT



DOSS 1.5W

600.-

DIA 35 mm. H 22 mm.



LED COB 1.5W 140lm



3000K, 4000K

Matt white, Matt black trim



Fixed

Aluminium Body

Driver included

Non-Dim

Dimmable (0-10V/ Triac) Optional

IP 20

RIZ 3W

750.-

DIA 40 mm. H 50 mm.



CREE CHIP LED 3W 260lm



3000K, 4000K

Matt white, Matt black trim



Fixed

Aluminium Body

Driver included

Non-Dim

Dimmable (0-10V/ Triac) Optional

IP 20



FOCUS 3W

850.-

DIA 48 mm. H 37 mm.



CREE CHIP LED 3W 260lm



3000K, 6000K

Matt white, Matt black trim



Fully adjustable

Aluminium Body

Driver included

Non-Dim

Dimmable (0-10V/ Triac) Optional

IP 20



DISPLAY LIGHT



JOOX-A 3W

750.-

DIA 50 mm. H 30 mm.



CREE CHIP LED 3W 265lm



3000K, 4000K
Matt white trim

IP 20



Adjustable
Aluminium Body
Driver included
Non-Dim
Dimmable (0-10V/ Triac) Optional

JOOX-B 3W

750.-

DIA 40 mm. H 28 mm.



CREE CHIP LED 3W 265lm



3000K, 4000K
Matt white trim

IP 20



Fixed
Aluminium Body
Driver included
Non-Dim
Dimmable (0-10V/ Triac) Optional



DISPLAY LIGHT